



Bramling Cross Gardens, Epping, CM16

BUTLER & STAG



**Bramling Cross Gardens, is Eppings latest new build gated development, comprising just ten houses which ooze sophistication and style.**

**These new homes effortlessly combine modern comforts with timeless elegance with unparalleled opportunity to experience luxury living in an envious location. With its spacious layout, high-end finishes, and convenient amenities, this property truly sets the standard for gracious living in Epping, Essex.**



## **Freehold**

# **Asking Price £750,000**

Situated in the desirable residential area of Lindsey Street, each house is thoughtfully designed to harmonize with its natural surroundings. They boast large doors and windows throughout, providing a sense of timeless beauty while welcoming abundant natural light into every room.

As you approach the property, you are greeted by a striking façade showcasing the unique design of Bramling Close. The sleek and lustrous surface enhances the visual appeal and offers exceptional durability and weather resistance, ensuring the house maintains its impeccable appearance for years to come.

As you step inside these thoughtfully crafted residences, you'll discover the spacious open-plan layout that effortlessly blends style and functionality. The interiors boast high ceilings, creating an airy ambiance that adds to the overall sense of grandeur. With meticulous attention to detail, the houses feature sleek finishes, contemporary fixtures, and tasteful colour palettes that evoke a sense of sophistication.

The contemporary kitchens are adorned with top-of-the-line appliances, ample storage space, and exquisite countertops that inspire culinary creativity. Adjoining the kitchen, you'll find generous dining areas, perfect for hosting intimate gatherings or enjoying family meals.

The living spaces display comfort and offer a cozy haven for relaxation and entertainment. Expansive windows provide panoramic views of the surrounding landscape, creating a seamless connection between indoor and outdoor living.

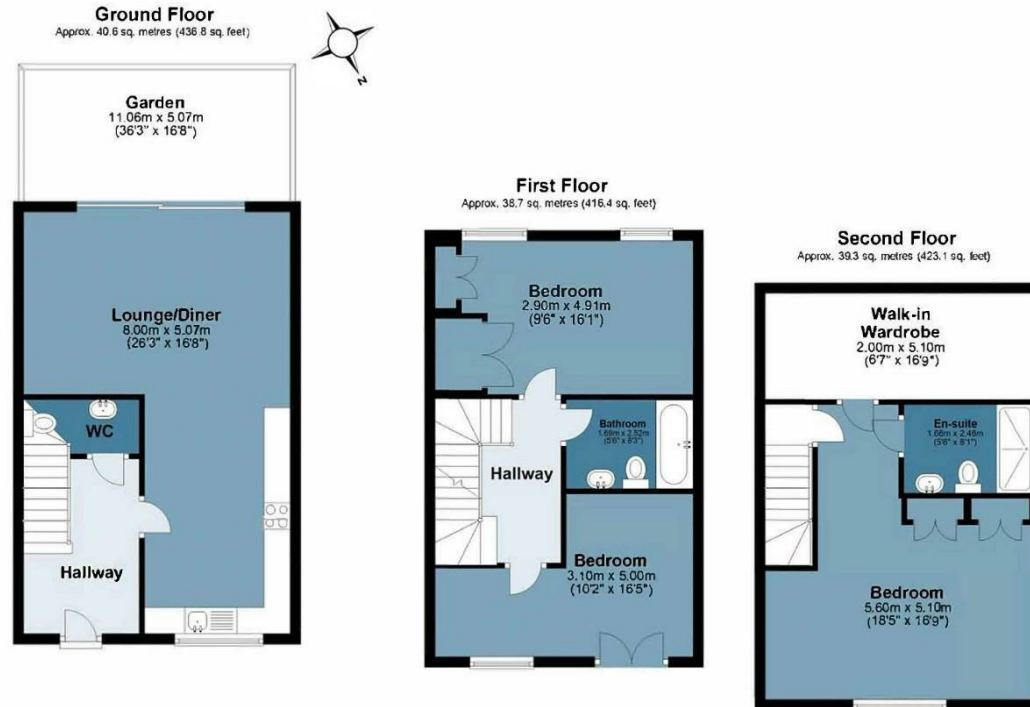
Upstairs, the bedrooms provide a retreat from the hustle and bustle of daily life. Each room is generously proportioned and designed to maximize comfort, featuring plush carpeting, ample storage, and large windows that fill the space with natural light. The family bathroom boasts an open and airy feel, thanks to its abundant floor space and



## Plot 8 The Bramlings

Approx. Gross Internal Area 118.6 Sq M ( 1276.2 Sq Ft )

**BUTLER & STAG**



Measurements are approximate and for illustration purposes only. While we do not doubt the accuracy and completeness, we advise you conduct a careful independent assessment of the property to determine monetary value.

© @modephotouk www.modephotouk.co.uk

Prepared on behalf of Butler & Stag  
Land and New Homes

If you have any further questions  
please don't hesitate to contact us on  
the details below

**BUTLER & STAG**

☎ 020 4542 2999

🏠 12 Coppice Row Theydon Bois, Essex, CM16 7ES

✉ enquires@butlerandstag.com

[www.butlerandstag.uk](http://www.butlerandstag.uk)

IMPORTANT NOTICE - These particulars have been prepared in good faith and they are not intended to constitute part of an offer or contract. We have not performed a structural survey on this property and the services, appliances and specific fittings have not been tested. All photographs, measurements, floor plans and distances referred to are given as a guide and should not be relied upon.